

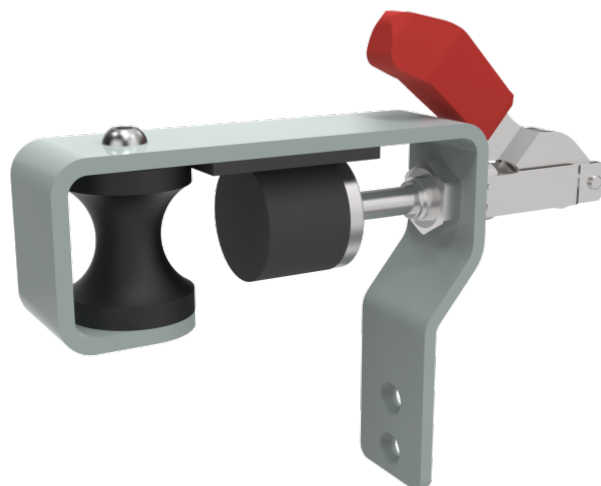
Quick clamping device for clamping bars

Universal

Z-DOCK50

PRODUCT DESCRIPTION

Retrofittable	yes
Field of application	Patient beds / Emergency Stretchers
Size	approx. 225 mm (L) x 40 mm (W) x 170 mm (H)
Inclusion for	Ø 25 mm to Ø 45 mm
Bed mounting	tightly clasped



Z-DOCK50

Quick clamping device for clamping bars



Safety

This docking module is compatible with all docking carts of the provi-Dock series.

